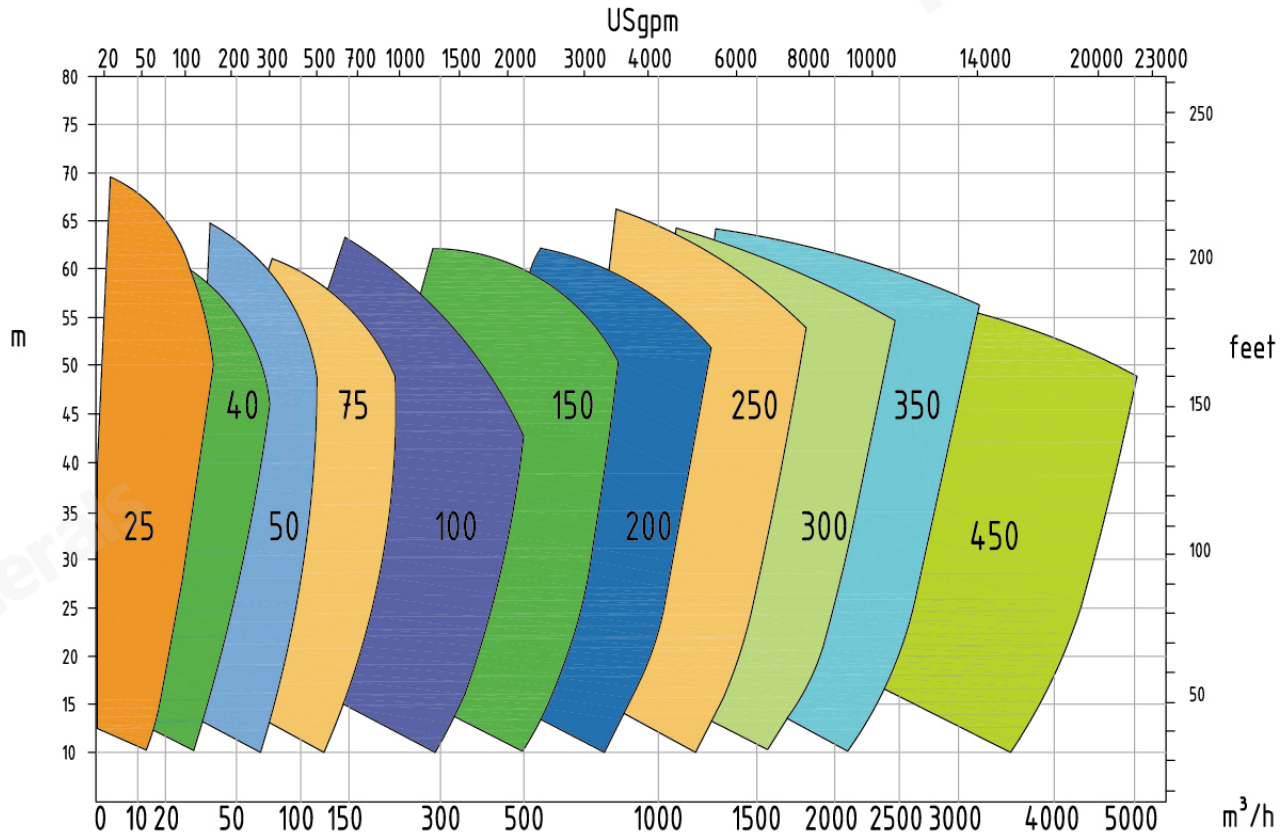




MS Series Slurry Pump

MS Pump Selection Chart

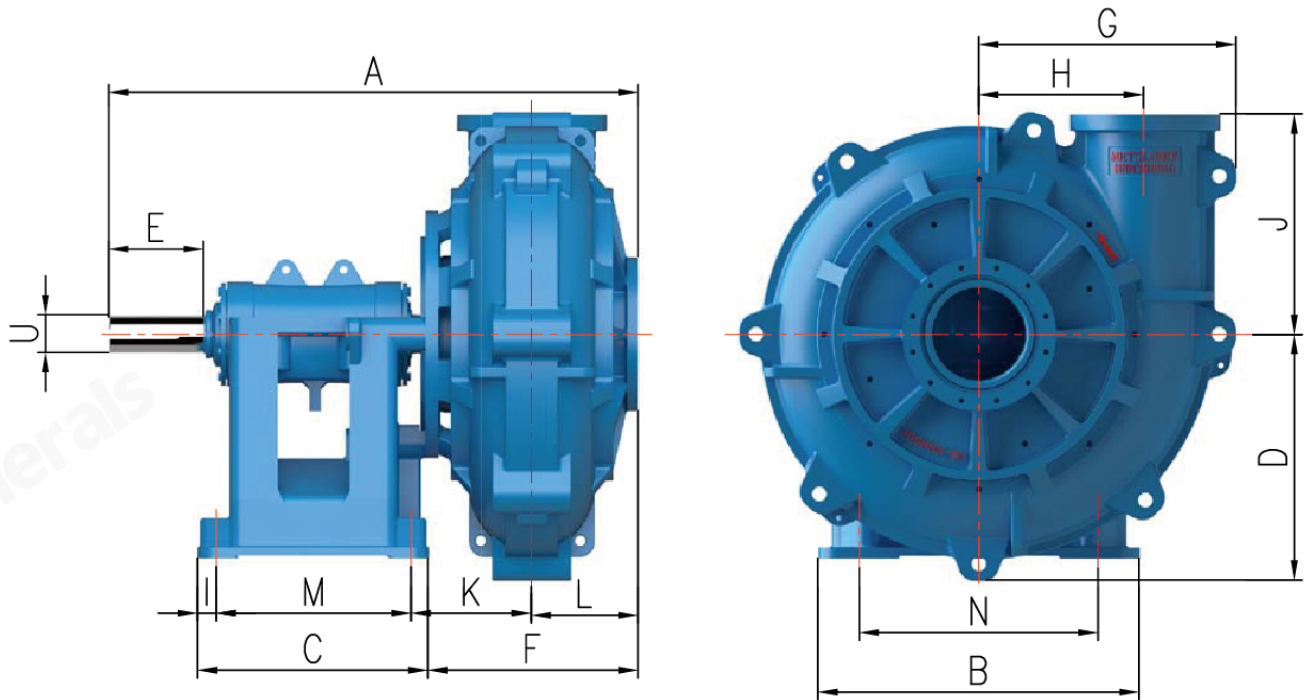


Technical Parameters

Pump Mode	Flow Range (m³/hr)	Head Range (m)	Speed(r/min)	NPSHr(m)	Outlet Diameter (mm)	Import Diameter (mm)	Impeller Diameter (mm)	Vanes (Pieces)	Weight (Kg)
25I-MS	12.6-28.8	6-68	1200-3800	2-4	25	38	152	5	91
25I-MSR	10.8-25.2	7-52	1400-3400	2-4	25	38	152	3	77
40I-MS	32.4-72	6-58	1200-3200	3.5-8	38	51	184	5	104
40I-MSR	25.2-54	5.5-41	1000-2600	2.5-5	38	51	180	5	118
50J-MS	39.6-86.4	12-64	1300-2700	4-6	51	76	214	5	191
50J-MSR	36-75.6	13-39	1300-2100	2-4	51	76	215	5	154
75J-MS	86.4-198	9-52	1000-2200	4-6	76	102	245	5	263
75J-MSR	79.2-180	5-34.5	800-1800	3-5	76	102	245	5	236
75K-MS	86.4-198	9-52	1000-2200	4-6	76	102	245	5	363
75K-MSR	79.2-180	5-34.5	800-1800	3-5	76	102	245	5	290
100K-MS	162-360	12-56	800-1550	5-8	102	152	365	5	626
100K-MSR	144-324	12-45	800-1350	3-5	102	152	365	5	454
100HKK-MS	100-400	10-70	800-1800	3-10	102	152	400	4	680
100L-MS	162-360	12-56	800-1550	5-8	102	152	365	5	728
100L-MSR	144-324	12-45	800-1350	3-5	102	152	365	5	454
150L-MS	360-828	10-61	500-1140	2-9	152	203	510	5	1473
150L-MSR	32-720	7-49	400-1000	5-10	152	203	510	5	982
150Q-MS	360-828	10-61	500-1140	2-9	152	203	510	5	1655
150Q-MSR	32-720	7-49	400-1000	5-10	152	203	510	5	1164
150HM-MS	300-800	10-80	500-1200	3-10	152	203	560	4	2200
200HM-MS	500-1500	10-80	400-1000	3-10	203	254	750	4	3500
200RS-MS	612-1368	11-61	400-850	4-10	203	254	686	5	3750
200RS-MSR	540-1188	12-50	400-750	4-12	203	254	686	5	3130
250HM-MS	1000-2000	10-80	400-900	3-7	254	305	815	4	4600
250RS-MS	936-1980	7-68	300-800	6	254	305	762	5	4318
250RS-MSR	720-1620	7-45	300-650	2.5-7.5	254	305	762	5	3357
300RS-MS	1260-2772	13-63	300-600	3-10	305	356	965	5	6409
300RS-MSR	1152-2520	13-44	300-500	3-8	305	356	965	5	4672
300HNN-MS	1500-2500	10-80	300-700	3-10	305	356	1024	4	7200
350HTV-MS	2000-4000	10-80	250-650	3-10	356	406	1100	5	10120
450TV-MS	2520-5400	13-57	200-400	5-10	457	508	1370	5	17840
450TV-MSR	1800-4680	13-44	200-350	2-7	457	508	1370	5	12750

*The pump model highlighted in red is our company's new generation slurry pump

MS Outline Dimension



Pump Model	A	B	C	D	U	E	F	G	H	I	J	K	L	M	N	Weight/Kg Metal	Weight/Kg Rubber
25I-MS(R)	583	295	248	197	28	79	206	181	98	24	171	181	107	143	254	91	77
40I-MS(R)	592	295	248	197	28	79	217	205	114	24	184	184	115	143	254	104	118
50J-MS(R)	768	406	311	254	42	121	281	238	138	32	210	233	151	175	356	191	154
75J-MS(R)	843	406	311	254	42	121	354	292	149	32	262	271	187	175	356	263	236
75K-MS(R)	943	492	364	330	65	164	353	292	149	38	262	280.5	187.1	213	432	363	290
100K-MS(R)	1021	492	364	330	65	164	421	406	229	38	338	318	219	213	432	626	454
100HKK-MS	1024	492	364	342	60	166	424	400	229	38	338	317.5	219.5	213	432	680	/
100L-MS(R)	1178	622	448	457	80	205	433	406	229	54	338	351	219	257	564	728	635
150L-MS(R)	1302	622	448	457	80	222	557	551	318	54	460	402	292	257	546	1473	982
150Q-MS(R)	1360	680	590	350	85	222	554	551	318	50	460	312	297	490	560	1655	1164
150HM-MS	1504	857	633	610	100	279	542	593	318	95	460	436	293	349	762	2200	/
200HM-MS	1640	990	705	685	100	281	684	731	419	61	635	410	334	584	762	3500	/
200RS-MS(R)	1748	1150	780	650	120	280	692	673	419	80	635	439	334	620	900	3750	3130
250HM-MS	1715	990	705	767	100	279	753	819	464	61	673	432	381	584	762	4600	/
250RS-MS(R)	1816	1150	780	650	120	280	762	755	464	80	674	461	381	620	900	4318	3357
300RS-MS(R)	1873	1150	780	650	120	280	812	937	629	80	832	486	406	620	900	6409	4672
300HNN-MS	2027	1219	876	851	140	361	800	977	629	63.5	832	457	406	749	851	7200	/
350HTV-MS	2340	1460	1050	984	150	350	957.5	1041	660	95	889	597	455.5	860	1200	10120	/
450TV-MS(R)	2467	1460	1050	900	150	350	1100	1414	940	92	1230	616	581	860	1200	17840	12750

The efficiency of the new pump is increased by 6–8% compared with the original pump.

Easier installation, tighter fit of frame plate and cover plate, more accurate interface size at the outlet.

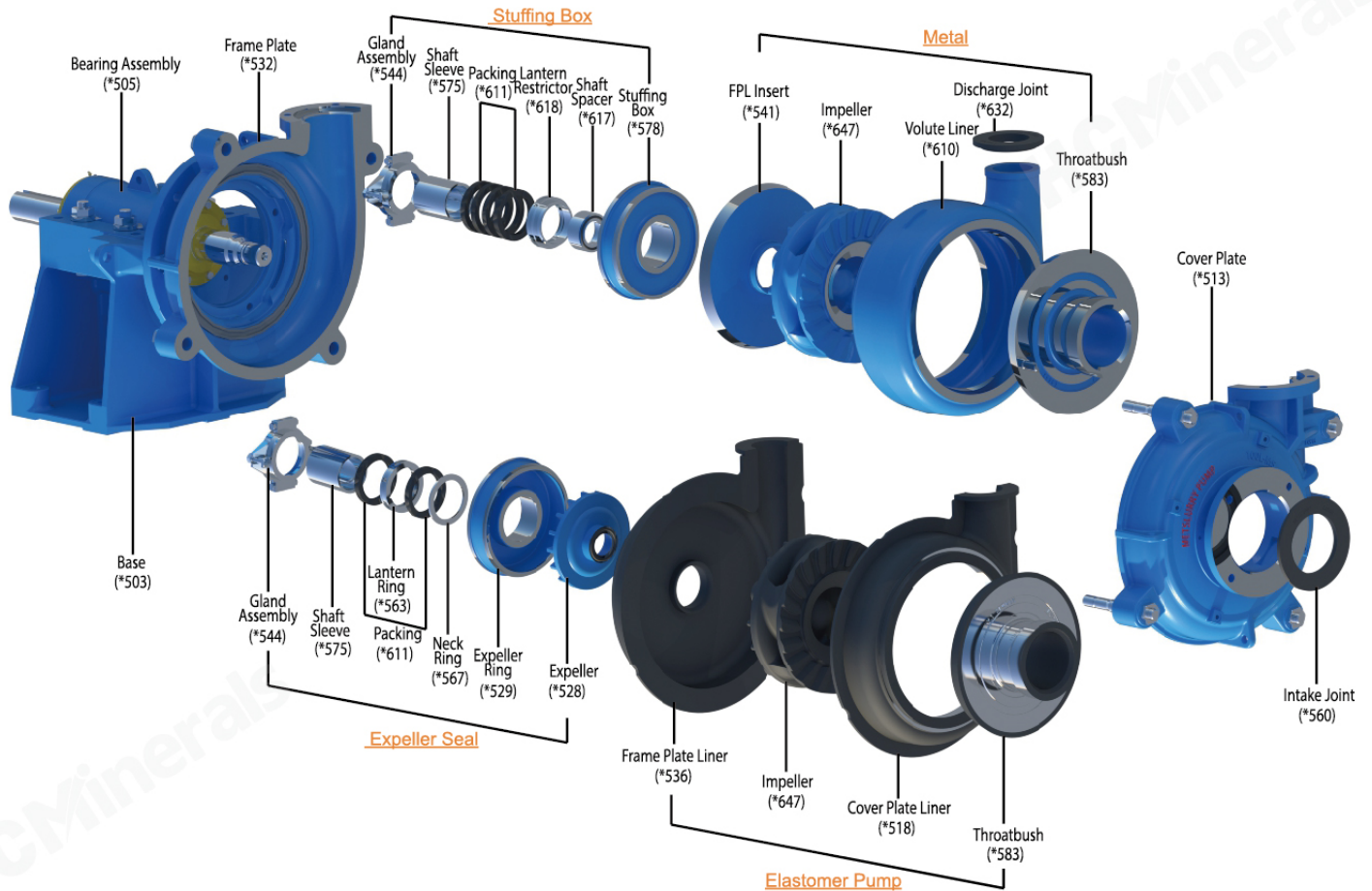
Improve the ease of installation and positioning accuracy of the volute, to avoid leakage caused by the displacement of the volute.

New type slurry pump advantages

Increase the overall pressure-bearing capacity of the pump and extend the service life of the wet end parts.

Improve the ease of volute installation, more accurate positioning, and reduce displacement. By increasing the positioning of the volute outlet and reducing the overall force range, to improve the service life of the volute.

The throat bush and volute fit more reasonably and improve the sealing.



Explosion View Of Ms Series Pump

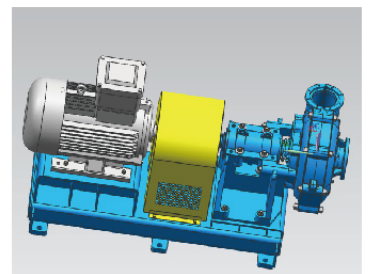
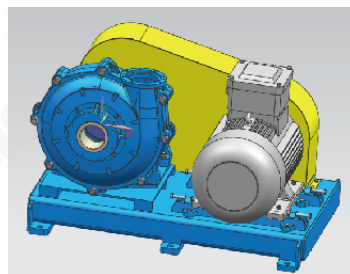
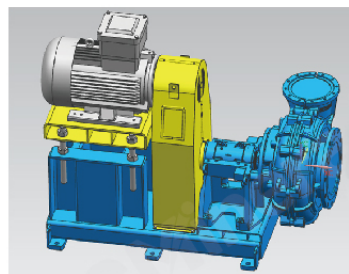
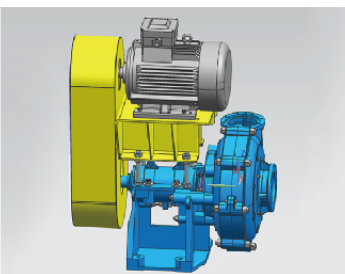
DRIVE TYPE

CV

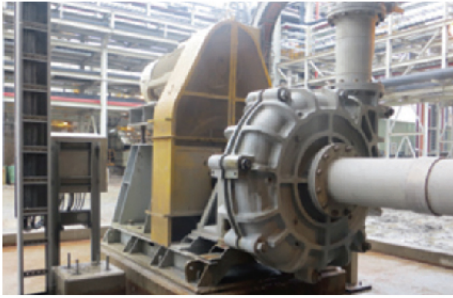
ZV(Z)

CR(Z)/CL(Z)

DC(Z)



Applications



MS(R) series slurry pump adopts general wear and corrosion resistant materials. It's suitable for a variety of working conditions, such as slurry, tailings transport, ash removal in power plants, flue gas desulfurization and coal washing, etc., with low operating costs and shorter maintenance and downtime.

Mineral processing

MS(R) series slurry pump adopts general wear and corrosion resistant materials. It's suitable for a variety of working conditions, such as slurry, tailings transport, ash removal in power plants, flue gas desulfurization and coal washing, etc., with low operating costs and shorter maintenance and downtime.



Chemical Industry

Usage of versatile wear-resistant and corrosion-resistant metal and rubber, together with mechanical seal, allow the MS(R) series slurry pumps wide applications in this area.

Coal washing

The multi-functional wear-resistant materials and wear-resistant structure design, together with the special cooling system, ensure that the bearing can still maintain low temperature operation when conveying high-temperature media, thus also extending its application to the conveying of steel slag.



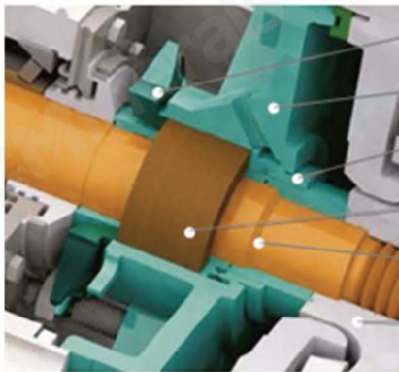
Flue Gas Desulfurization

Specifically developed for corrosive slurries containing chloride ions, the wear and corrosion resistant metal and rubber make this series of slurry pumps have a wide range of applications in the field of flue gas desulfurization.

Metallurgy

The multi-functional wear-resistant materials and wear-resistant structure design, together with the special cooling system, ensure that the bearing can still maintain low temperature operation when conveying high-temperature media, thus also extending its application to the conveying of steel slag.

Shaft seal selection



- Gland
- Stuffing Box
- Lantern Restrictor
- Packing
- Shaft
- Impeller

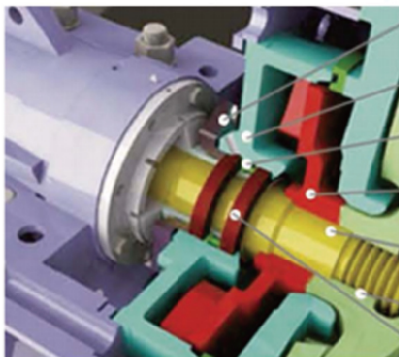
Packing Seal

Packing seal

The most versatile type of seal. Water at a certain pressure is injected into the packing through the Lantern Restrictor to prevent slurry leakage. Simple structure, easy maintenance and low cost.

Expeller seal

The expeller generates reverse centrifugal force to prevent leakage. When the positive pressure on the suction side is no more than 10% of the positive pressure on the discharge side, it can be used in the first stage of single-stage pumps or tandem multi-stage pumps. No sealing water is needed, so the slurry will not be diluted, and the sealing effect is reliable, and it is suitable for the occasion that the slurry is not diluted.



- Gland
- Stuffing Box
- Lantern Ring
- Expeller
- Shaft
- Impeller
- Packing

Expeller Seal

Mechanical seal

For applications that do not allow any external substances to mix with the pumped slurry, such as the chemical or food industries.